



# 65E / *Motor Grader*

TURBO

*Built From a Lineage  
of Market Leaders for  
Over 65 Years*



120 HP  
16,900 LBS  
10' or 12' BLADE

Pictured with optional equipment

## **Compact Grader With Big Grader Features**

- 53" Circle With "A" Frame Drawbar
- Full Power Shift Transmission With Torque Converter
- Torque Proportioning Rear Differential

[www.noram65.com](http://www.noram65.com)

# 65E / Motor Grader

## TURBO



USA Heritage  
Since 1949

### BIG GRADER FEATURES IN A SMALL PACKAGE

#### Operating Weight

- Front 4,700 lbs
- Rear 12,200 lbs
- Total 16,900 lbs

#### Engine

- |                       |                       |
|-----------------------|-----------------------|
| Cummins QSF3.8        | Caterpillar C3.4      |
| 4 Cycle, turbo diesel | 4 Cycle, turbo diesel |
| 4 cylinder            | 4 cylinder            |
| Tier 4 Final          | Tier 4 Final          |
| 120 hp                | 120 hp                |

#### Brakes

- Power brakes
- Service – 4 wheel, wet disc & self adjusting
- Independent tandem by tandem system
- Mechanical parking brake

#### Axles

- Front axle clearance – 20.3"
- Rear axle – torque proportioning differential

#### Transmission

- Full power shift with torque converter
- 6 speeds forward – top speed 24 mph
- Electronic shift control
- LCD operations monitor
- Shift inhibit system

#### Circle

- 53" diameter gear driven circle
- Supported by "A" frame
- 4 guides with wear plates
- Shim adjustable
- 360° rotation
- Hydraulic circle side shift

#### Moldboard

- "Rollaway" blade with involute curve
- Replaceable cutting edges
- Size – 10' wide, 21" high
- Interchangeable end bits



Full power shift transmission with torque converter



53" gear driven circle with "A" frame allows 360° blade rotation

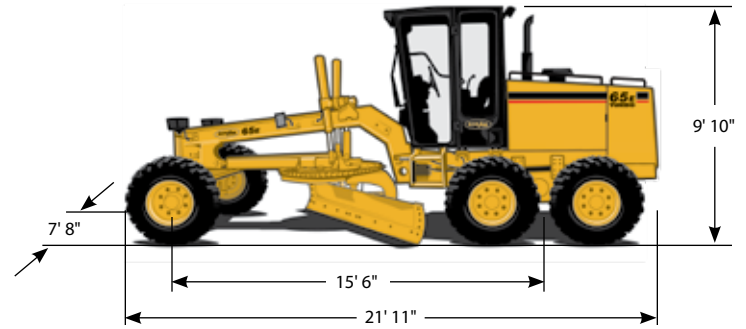


Illustration includes optional equipment

### STANDARD EQUIPMENT

- Accelerator/decelerator and hand throttle
- Alternator – 120 Amp.
- Articulated frame
- Back-up alarm
- Battery – 12 volt
- Controls, hydraulic
  - Articulation
  - Circle side shift
  - Circle turn
  - Moldboard lift/lower
  - Moldboard side shift
  - Wheel lean
- Control console, adjustable
- Drawbar
- Engine side panels
- Gauges
  - Air cleaner service indicator
  - Engine coolant temperature
  - Engine oil pressure
  - Fuel and DEF level
  - Hourmeter
  - Tachometer
  - Transmission LCD message center
  - Transmission oil temperature
  - Voltmeter
- Horn, electric
- Hydraulic valve – 8 section
- Implement control lever lock
- Light package
  - Front headlights (2) – hi/lo beam
  - Front worklights (2)
  - Turn signals, stop and tail lights
- Master electrical switch
- Mechanical parking brake
- Muffler, horizontal under hood
- Moldboard – 10' wide
- Moldboard pitch, manual
- ROPS Canopy with
  - Dome light
  - Floormat
  - Glove box
  - Grab handles
  - Headliner
  - Inside mirror
  - Seat belt
- Seat, vinyl – deluxe air suspension
- Steps, right and left
- Tires – 15.00 x 19.5 (8PR) G2 tubeless
- Transport tie down group
- Vandalism protection

NorAm Construction Equipment  
50 N. Brockway St., # 308  
Palatine, IL 60067  
847-934-6565  
[www.noram65.com](http://www.noram65.com)



The information contained in this brochure is intended to be of general nature only. The manufacturer may at any time and from time to time, for technical or other necessary reasons, modify any of the details or specifications of the product described in this brochure. Illustrations do not necessarily show products in standard condition. The dimensions, weights and capacities shown herein, as well as any conversion data used, are approximate only and are subject to variations within normal manufacturing techniques. To be sure of getting accurate, detailed and up-to-date information, any intending buyer should contact NorAm.

### OPTIONAL EQUIPMENT

- Cab, includes
  - Cloth seat – air suspension
  - Defroster fans (2)
  - F & R wipers/washers
  - Heater, 40,000 BTU
  - Inside mirror
  - Sliding rear window
  - Sound suppression
  - Tinted glass
- Dozer – 8' x 2', with skid plates
- Engine block heater
- Factory air conditioner
- Float control valves, (3)
- Floodlights, (2) F & (2) R
- Mirrors, rearview – external, (2)
- Moldboard – 12' wide
- Moldboard pitch, hydraulic
- Radio group
- Rear ripper – 75" wide, 3 shanks
- Scarifier – 41" wide, 9 teeth
- Strobe light
- 90° bank slope saddle



Deluxe cab



Scarifier



Dozer blade



90° Bank slope saddle